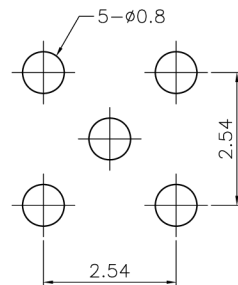
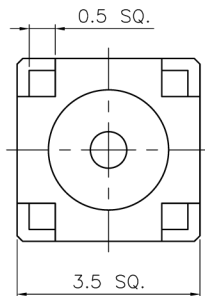
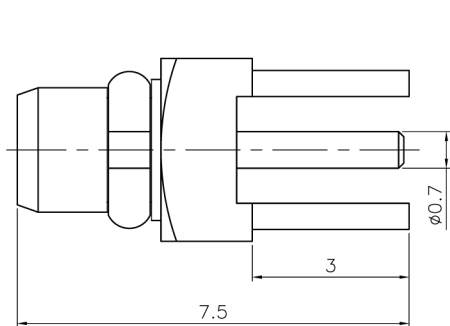


REVISIONS		
ISS	ZONE	DESCRIPTION\PER REQUEST\DATE

注意事項
1 包裝方式:500/盤 PVC



PCB MOUNTING HOLE
(印刷電路板架設孔)

TYPICAL SPECIFICATIONS

- 1.0. ELECTRICAL
 - 1.1. FREQUENCY RANGE: DC-6 GHz
 - 1.2. NOMINAL IMPEDANCE: 50 OHM
 - 1.3. WORKING VOLTAGE: 170 VOLTS MAX.
 - 1.4. PROOF VOLTAGE: 500 VOLTS
- 2.0. MATERIALS
 - 2.1. BODIES: BRASS PER JIS-C3604
 - 2.2. CENTER CONTACT: BRASS PER JIS-C3604
 - 2.3. INSULATION: PTFE PER ASTM D1457 AND ASTM D1710
 - 2.4. RING: BERYLLIUM COPPER PER ASTM B196 UNS C17200
- 3.0. ENVIRONMENTAL
 - 3.1. OPERATING TEMPERATURE RANGE: -55° C TO +155° C

4	RING	BE CU	GOLD	1	MMCX1121A1-4BEG
3	CONTACT PIN	BRASS	GOLD	1	MMCX1251A1-3G
2	INSULATOR	PTFE	WHITE	1	MMCX1251A1-2T-50
1	BODY	BRASS	GOLD	1	MMCX1251A1-1G
NO.	DESCRIPTION	MATERIAL	FINISH	Q'TY	DRAWING NO.

DIMENSIONS ARE IN MILLIMETERS UNLESS OTHERWISE SPECIFIED TOLERANCES		APPROVED/核准	TITLE/品名	
ANGLES = ±3° UP TO 6 = ±0.1 6-40 = ±0.2 40-120 = ±0.6 120-315 = ±1 ABOVE 315 = ±1.6		MARK	MMCX STR PCB PLUG	
SCALE/比例 10/1		CHECKED/檢查	DRAWING NO./圖號	
DATE/時間 05-20-12		MARK	MMCX1251A1-GTG-50	REV A
FILE NO. F:\CAD\MMCX\1251A1\50\GTG-A#		MARK	CUSTOMER NO./客戶編號	REV

JAW Dropper
Innovation Channel Co.,Ltd.