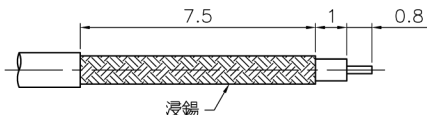
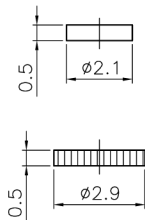
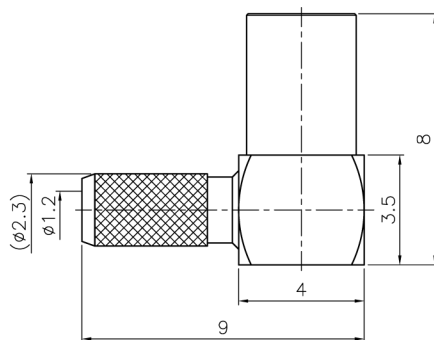


REVISIONS		
ISS	ZONE	DESCRIPTION\PER REQUEST\DATE

注意事項  
1 包裝方式: 1000/包



RECOMMENDED  
CABLE STRIPPING DIM'S  
(建議剝線尺寸)



1. CONTACT PIN AND BARREL TO SOLDER

TYPICAL SPECIFICATIONS

1.0. ELECTRICAL

- 1.1. FREQUENCY RANGE: DC-6 GHz
- 1.2. NOMINAL IMPEDANCE: 50 OHM
- 1.3. WORKING VOLTAGE: 85 VOLTS MAX.
- 1.4. PROOF VOLTAGE: 250 VOLTS
- 1.5. VSWR: 1.3 MAX. @ 3 GHz

2.0. MATERIALS

- 2.1. BODIES: BRASS PER JIS-C3604
- 2.2. CENTER CONTACT: BERYLLIUM COPPER PER ASTM B196 UNS C17300
- 2.3. INSULATION: PTFE PER ASTM D1457 AND ASTM D1710

3.0. ENVIRONMENTAL

- 3.1. OPERATING TEMPERATURE RANGE: -55° C TO +155° C

DIMENSIONS ARE IN MILLIMETERS

APPROVED/核准

UNLESS OTHERWISE SPECIFIED  
TOLERANCES

- ANGLES = ±3'
- UP TO 6 = ±0.1
- 6-40 = ±0.2
- 40-120 = ±0.6
- 120-315 = ±1
- ABOVE 315 = ±1.6

CHECKED/檢查

DRAWN/繪圖

SCALE/比例 6/1

DATE/時間 05-20-12' FILE NO. F:\CAD\MMCX\6122A2\50\GTG-1.13-A#

MARK

MARK

MARK

**JAWDropper**  
Innovation Channel Co., Ltd.

TITLE/品名 MMCX R/A JACK  
(1.13mm)

DRAWING NO./圖號  
MMCX6122A2-GTG-1.13-50

CUSTOMER NO./客戶編號

REV A

REV

6	COVER	BRASS	GOLD	1	CV-29X05G
5	INSULATOR	POM	NATURAL	1	NS-21X05D
4	BARREL	BRASS	GOLD	1	MMCX1122A2-1-23/12G
3	CONTACT PIN	BE CU	GOLD	1	MMCX6122A1-3BE-1/05G
2	INSULATOR	PTFE	WHITE	1	MMCX6122A1-2T-50
1	BODY	BRASS	GOLD	1	MMCX6122A1-1G
NO.	DESCRIPTION	MATERIAL	FINISH	Q'TY	DRAWING NO.