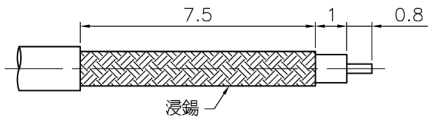
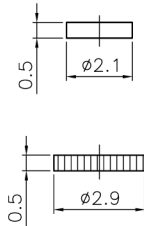
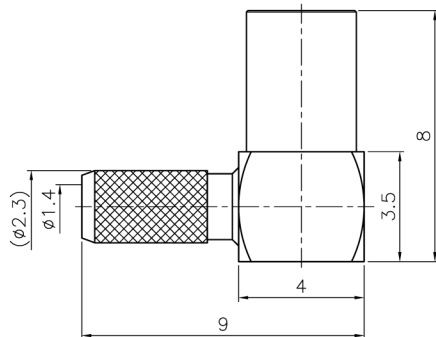


| REVISIONS |      |                              |
|-----------|------|------------------------------|
| ISS       | ZONE | DESCRIPTION\PER REQUEST\DATE |
|           |      |                              |

注意事項  
1 包裝方式: 1000/包



RECOMMENDED  
CABLE STRIPPING DIM'S  
(建議剝線尺寸)



1. CONTACT PIN AND BARREL TO SOLDER

TYPICAL SPECIFICATIONS

1.0. ELECTRICAL

- 1.1. FREQUENCY RANGE: DC-6 GHz
- 1.2. NOMINAL IMPEDANCE: 50 OHM
- 1.3. WORKING VOLTAGE: 85 VOLTS MAX.
- 1.4. PROOF VOLTAGE: 250 VOLTS
- 1.5. VSWR: 1.3 MAX. @ 3 GHz

2.0. MATERIALS

- 2.1. BODIES: BRASS PER JIS-C3604
- 2.2. CENTER CONTACT: BERYLLIUM COPPER PER ASTM B196 UNS C17300
- 2.3. INSULATION: PTFE PER ASTM D1457 AND ASTM D1710

3.0. ENVIRONMENTAL

- 3.1. OPERATING TEMPERATURE RANGE: -55° C TO +155° C

DIMENSIONS ARE IN MILLIMETERS

APPROVED/核准

UNLESS OTHERWISE SPECIFIED TOLERANCES

- ANGLES = ±3'
- UP TO 6 = ±0.1
- 6-40 = ±0.2
- 40-120 = ±0.6
- 120-315 = ±1
- ABOVE 315 = ±1.6

SCALE/比例 6/1

CHECKED/檢查

DRAWN/繪圖

DATE/時間 05-20-12' FILE NO. F:\CAD\MMCX\6122A2\50\GTG-1.37-A

MARK

MARK

MARK

**JAW Dropper**  
Innovation Channel Co., Ltd.

TITLE/品名  
MMCX R/A JACK  
(1.32mm, 1.37mm)

DRAWING NO./圖號  
MMCX6122A2-GTG-1.37-50

CUSTOMER NO./客戶編號

|     |   |
|-----|---|
| REV | A |
| REV |   |

|     |             |          |         |      |                      |
|-----|-------------|----------|---------|------|----------------------|
| 6   | COVER       | BRASS    | GOLD    | 1    | CV-29X05G            |
| 5   | INSULATOR   | POM      | NATURAL | 1    | NS-21X05D            |
| 4   | BARREL      | BRASS    | GOLD    | 1    | MMCX1122A2-1-23/14G  |
| 3   | CONTACT PIN | BE CU    | GOLD    | 1    | MMCX6122A1-3BE-1/05G |
| 2   | INSULATOR   | PTFE     | WHITE   | 1    | MMCX6122A1-2T-50     |
| 1   | BODY        | BRASS    | GOLD    | 1    | MMCX6122A1-1G        |
| NO. | DESCRIPTION | MATERIAL | FINISH  | Q'TY | DRAWING NO.          |