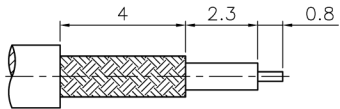
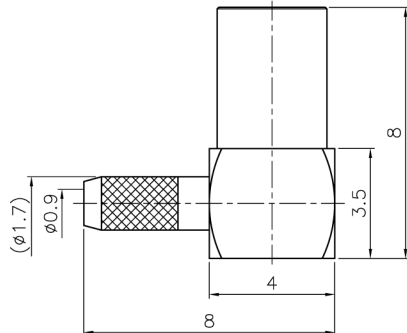
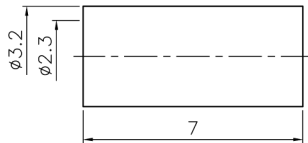


REVISIONS		
ISS	ZONE	DESCRIPTION\PER REQUEST\DATE

注意事項
1 包裝方式: 1000/包



RECOMMENDED
CABLE STRIPPING DIM'S
(建議剝線尺寸)



TYPICAL SPECIFICATIONS

1.0. ELECTRICAL

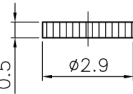
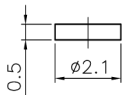
- 1.1. FREQUENCY RANGE: DC-6 GHz
- 1.2. NOMINAL IMPEDANCE: 50 OHM
- 1.3. WORKING VOLTAGE: 170 VOLTS MAX.
- 1.4. PROOF VOLTAGE: 500 VOLTS
- 1.5. VSWR: 1.3 MAX. @ 3 GHz

2.0. MATERIALS

- 2.1. BODIES: BRASS PER JIS-C3604
- 2.2. CENTER CONTACT: BERYLLIUM COPPER PER ASTM B196 UNS C17300
- 2.3. INSULATION: PTFE PER ASTM D1457 AND ASTM D1710
- 2.4. FERRULE: BRASS PER JIS-C2700

3.0. ENVIRONMENTAL

- 3.1. OPERATING TEMPERATURE RANGE: -55° C TO +155° C



1. CRIMPED FERRULE
HEX. CRIMP SIZE .100"
2. CONTACT PIN TO SOLDER

7	FERRULE	BRASS	GOLD	1	FR-32/23X7G
6	COVER	BRASS	GOLD	1	CV-29X05G
5	INSULATOR	POM	NATURAL	1	NS-21X05D
4	BARREL	BRASS	GOLD	1	MMCX1122A1-1-17/09G
3	CONTACT PIN	BE CU	GOLD	1	MMCX6122A1-3BE-1/05G
2	INSULATOR	PTFE	WHITE	1	MMCX6122A1-2T-50
1	BODY	BRASS	GOLD	1	MMCX6122A1-1G
NO.	DESCRIPTION	MATERIAL	FINISH	Q'TY	DRAWING NO.

DIMENSIONS ARE IN MILLIMETERS	
UNLESS OTHERWISE SPECIFIED TOLERANCES	
ANGLES	= ±3'
UP TO 6	= ±0.1
6-40	= ±0.2
40-120	= ±0.6
120-315	= ±1
ABOVE 315	= ±1.6
SCALE/比例	6/1
DATE/時間	05-20-12'

APPROVED/核准	MARK
CHECKED/檢查	MARK
DRAWN/繪圖	MARK
FILE NO. F:\CAD\MMCX\6122A1\50\GTG-178U-A#	

JAWDropper Innovation Channel Co.,Ltd.	
TITLE/品名 MMCX R/A JACK	
DRAWING NO./圖號 MMCX6122A1-GTG-178U-50	REV A
CUSTOMER NO./客戶編號	REV