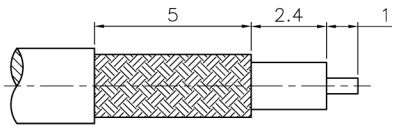
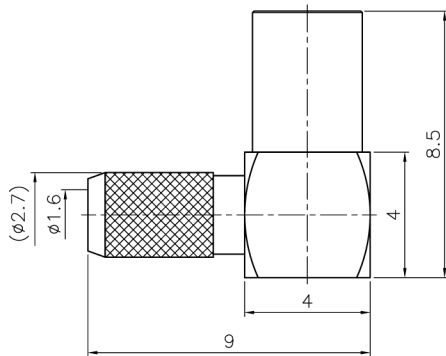
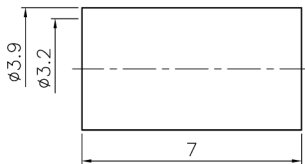


REVISIONS		
ISS	ZONE	DESCRIPTION\PER REQUEST\DATE

注意事項  
1 包裝方式: 1000/包



RECOMMENDED  
CABLE STRIPPING DIM'S  
(建議剝線尺寸)



TYPICAL SPECIFICATIONS

1.0. ELECTRICAL

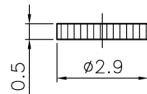
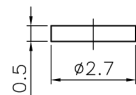
- 1.1. FREQUENCY RANGE: DC-6 GHz
- 1.2. NOMINAL IMPEDANCE: 50 OHM
- 1.3. WORKING VOLTAGE: 170 VOLTS MAX.
- 1.4. PROOF VOLTAGE: 500 VOLTS
- 1.5. VSWR: 1.3 MAX. @ 3 GHz

2.0. MATERIALS

- 2.1. BODIES: BRASS PER JIS-C3604
- 2.2. CENTER CONTACT: BERYLLIUM COPPER PER ASTM B196 UNS C17300
- 2.3. INSULATION: PTFE PER ASTM D1457 AND ASTM D1710
- 2.4. FERRULE: BRASS PER JIS-C2700

3.0. ENVIRONMENTAL

- 3.1. OPERATING TEMPERATURE RANGE: -55° C TO +155° C



1. CRIMPED FERRULE  
HEX. CRIMP SIZE .128"
2. CONTACT PIN TO SOLDER

7	FERRULE	BRASS	GOLD	1	FR-39/32X7G
6	COVER	BRASS	GOLD	1	CV-29X05G
5	INSULATOR	POM	NATURAL	1	NS-27X05D
4	BARREL	BRASS	GOLD	1	MMCX1122B1-1-27/16G
3	CONTACT PIN	BE CU	GOLD	1	MMCX6122B1-3BE-12/07G
2	INSULATOR	PTFE	WHITE	1	MMCX6122A1-2T-50
1	BODY	BRASS	GOLD	1	MMCX6122B1-1G
NO.	DESCRIPTION	MATERIAL	FINISH	Q'TY	DRAWING NO.

DIMENSIONS ARE IN MILLIMETERS

UNLESS OTHERWISE SPECIFIED  
TOLERANCES

- ANGLES =  $\pm 3'$   
 UP TO 6 =  $\pm 0.1$   
 6-40 =  $\pm 0.2$   
 40-120 =  $\pm 0.6$   
 120-315 =  $\pm 1$   
 ABOVE 315 =  $\pm 1.6$

SCALE/比例 6/1

APPROVED/核准

MARK

CHECKED/檢查

MARK

DRAWN/繪圖

MARK

FILE NO. F:\CAD\MMCX\6122B1\50\GTG-316U-A#

DATE/時間 05-20-12

**JAWDropper**  
Innovation Channel Co., Ltd.

TITLE/品名 MMCX R/A JACK  
(RG-174/U, 316/U, LMR-100)

DRAWING NO./圖號  
MMCX6122B1-GTG-316U-50

CUSTOMER NO./客戶編號

REV A

REV