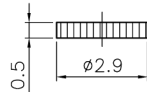
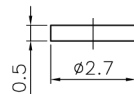
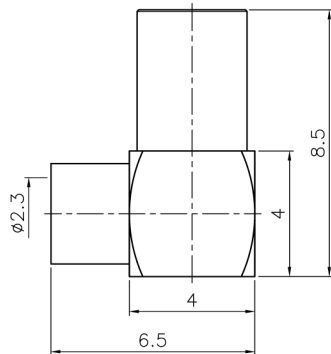


RECOMMENDED
CABLE STRIPPING DIM'S
(建議剝線尺寸)



1. CONTACT PIN AND BARREL TO SOLDER

TYPICAL SPECIFICATIONS

1.0. ELECTRICAL

- 1.1. FREQUENCY RANGE: DC-6 GHz
- 1.2. NOMINAL IMPEDANCE: 50 OHM
- 1.3. WORKING VOLTAGE: 170 VOLTS MAX.
- 1.4. PROOF VOLTAGE: 500 VOLTS
- 1.5. VSWR: 1.3 MAX. @ 3 GHz

2.0. MATERIALS

- 2.1. BODIES: BRASS PER JIS-C3604
- 2.2. CENTER CONTACT: BERYLLIUM COPPER PER ASTM B196 UNS C17300
- 2.3. INSULATION: PTFE PER ASTM D1457 AND ASTM D1710

3.0. ENVIRONMENTAL

- 3.1. OPERATING TEMPERATURE RANGE: -55° C TO +155° C

NO.	DESCRIPTION	MATERIAL	FINISH	Q'TY	DRAWING NO.
6	COVER	BRASS	GOLD	1	CV-29X05G
5	INSULATOR	POM	NATURAL	1	NS-27X05D
4	BARREL	BRASS	GOLD	1	MMCX6182B1-4-32/23G
3	CONTACT PIN	BE CU	GOLD	1	MMCX6122B1-3BE-12/07G
2	INSULATOR	PTFE	WHITE	1	MMCX6122A1-2T-50
1	BODY	BRASS	GOLD	1	MMCX6122B1-1G

DIMENSIONS ARE IN MILLIMETERS		APPROVED/核准
UNLESS OTHERWISE SPECIFIED TOLERANCES		<p>MARK</p> <p>CHECKED/檢查</p> <p>MARK</p> <p>DRAWN/繪圖</p> <p>MARK</p>
ANGLES = ±3°		
UP TO 6 = ±0.1		
6-40 = ±0.2		
40-120 = ±0.6		
120-315 = ±1		<p>DRAWING NO./圖號</p> <p>MMCX6182B1-GTG-405U-50</p>
ABOVE 315 = ±1.6		
SCALE/比例	6/1	CUSTOMER NO./客戶編號
DATE/時間	05-20-12	REV
FILE NO./圖號	F:\CAD\MMCX\6182B1\50\GTG-405U-A#	REV

TITLE/品名		DRAWING NO./圖號	
MMCX R/A SEMI-RIGID JACK (.085")		MMCX6182B1-GTG-405U-50	
CUSTOMER NO./客戶編號		REV	A
		REV	

注意事項
1 包裝方式: 1000/包