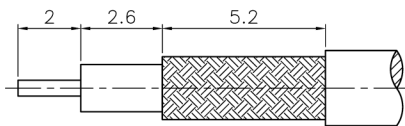


REVISIONS

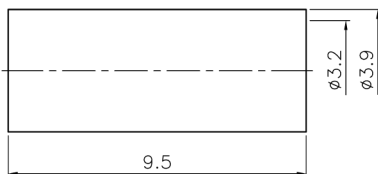
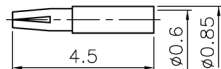
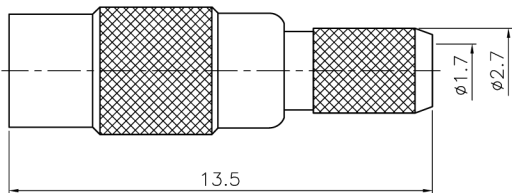
DESCRIPTION\PER REQUEST\DATE

注意事項

1 包裝方式:500/包



RECOMMENDED  
CABLE STRIPPING DIM'S  
(建議剝線尺寸)



TYPICAL SPECIFICATIONS

1.0. ELECTRICAL

- 1.1. FREQUENCY RANGE: DC-6 GHz
- 1.2. NOMINAL IMPEDANCE: 50 OHM
- 1.3. WORKING VOLTAGE: 170 VOLTS MAX.
- 1.4. PROOF VOLTAGE: 500 VOLTS

2.0. MATERIALS

- 2.1. BODIES: BRASS PER JIS-C3604
- 2.2. CENTER CONTACT: BERYLLIUM COPPER PER ASTM B196 UNS C17300
- 2.3. INSULATION: PTFE PER ASTM D1457 AND ASTM D1710
- 2.4. FERRULE: BRASS PER JIS-C2700

3.0. ENVIRONMENTAL

- 3.1. OPERATING TEMPERATURE RANGE: -55° C TO +155° C

- 1. CRIMPED FERRULE  
HEX. CRIMP SIZE .128"
- 2. CONTACT PIN TO SOLDER

DIMENSIONS ARE IN MILLIMETERS

APPROVED/核准

UNLESS OTHERWISE SPECIFIED TOLERANCES

- ANGLES = ±3'
- UP TO 6 = ±0.1
- 6-40 = ±0.2
- 40-120 = ±0.6
- 120-315 = ±1
- ABOVE 315 = ±1.6

CHECKED/檢查

DRAWN/繪圖

SCALE/比例 6/1

DATE/時間 05-20-12' FILE NO.F:\CAD\MMCX\6121F1\50\GTG-174U-A#

MARK

MARK

MARK

**JAWDropper**  
Innovation Channel Co.,Ltd.

TITLE/品名 MMCX STR JACK  
(RG-174/U,316/U,LMR-100)

DRAWING NO./圖號 MMCX6121F1-GTG-174U-50

CUSTOMER NO./客戶編號

REV A

REV

5	FERRULE	BRASS	GOLD	1	
4	CONTACT PIN	BE CU	GOLD 3u"	1	
3	BARREL	BRASS	GOLD	1	
2	INSULATOR	PTFE	WHITE	1	
1	BODY	BRASS	GOLD	1	
NO.	DESCRIPTION	MATERIAL	FINISH	Q'TY	DRAWING NO.