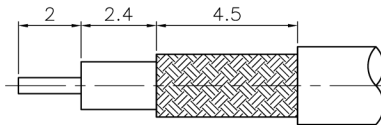
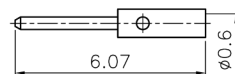
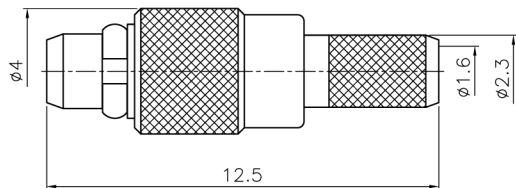


|           |      |                              |  |   |  |
|-----------|------|------------------------------|--|---|--|
| 1         |      | 2                            |  | 3 |  |
| REVISIONS |      |                              |  |   |  |
| ISS       | ZONE | DESCRIPTION\PER REQUEST\DATE |  |   |  |
|           |      |                              |  |   |  |

|      |              |
|------|--------------|
| 8    |              |
| 注意事項 |              |
| 1    | 包裝方式: 1000/包 |



RECOMMENDED  
CABLE STRIPPING DIM'S  
(建議剝線尺寸)



TYPICAL SPECIFICATIONS

- 1.0. ELECTRICAL
  - 1.1. FREQUENCY RANGE: DC-6 GHz
  - 1.2. NOMINAL IMPEDANCE: 50 OHM
  - 1.3. WORKING VOLTAGE: 170 VOLTS MAX.
  - 1.4. PROOF VOLTAGE: 500 VOLTS
- 2.0. MATERIALS
  - 2.1. BODIES: BRASS PER JIS-C3604
  - 2.2. CENTER CONTACT: BRASS PER JIS-C3604
  - 2.3. INSULATION: PTFE PER ASTM D1457 AND ASTM D1710
  - 2.4. RING: BERYLLIUM COPPER PER ASTM B196 UNS C17300
  - 2.5. FERRULE: BRASS PER JIS-C2700
- 3.0. ENVIRONMENTAL
  - 3.1. OPERATING TEMPERATURE RANGE: -55° C TO +155° C

1. CRIMPED FERRULE  
HEX. CRIMP SIZE .128"
2. CONTACT PIN TO SOLDER

|     |             |          |          |      |             |
|-----|-------------|----------|----------|------|-------------|
| 6   | FERRULE     | BRASS    | GOLD     | 1    |             |
| 5   | CONTACT PIN | BRASS    | GOLD 3u" | 1    |             |
| 4   | RING        | BE CU    | GOLD     | 1    |             |
| 3   | BARREL      | BRASS    | GOLD     | 1    |             |
| 2   | INSULATOR   | PTFE     | WHITE    | 1    |             |
| 1   | BODY        | BRASS    | GOLD     | 1    |             |
| NO. | DESCRIPTION | MATERIAL | FINISH   | Q'TY | DRAWING NO. |

|                                       |          |
|---------------------------------------|----------|
| DIMENSIONS ARE IN MILLIMETERS         |          |
| UNLESS OTHERWISE SPECIFIED TOLERANCES |          |
| ANGLES = ±3'                          |          |
| UP TO 6 = ±0.1                        |          |
| 6-40 = ±0.2                           |          |
| 40-120 = ±0.6                         |          |
| 120-315 = ±1                          |          |
| ABOVE 315 = ±1.6                      |          |
| SCALE/比例                              | 6/1      |
| DATE/時間                               | 05-20-12 |

|             |                                   |
|-------------|-----------------------------------|
| APPROVED/核准 | MARK                              |
| CHECKED/檢查  | MARK                              |
| DRAWN/繪圖    | MARK                              |
| FILE NO./圖號 | F:\CAD\MMCX\1121G1\50\GTG-174U-A# |

|   |       |
|---|-------|
| <b>JAWDropper</b><br>Innovation Channel Co.,Ltd.      |       |
| TITLE/品名<br>MMCX STR PLUG<br>(RG-174/U,316/U,LMR-100) |       |
| DRAWING NO./圖號<br>MMCX1121G1-GTG-174U-50              | REV A |
| CUSTOMER NO./客戶編號                                     | REV   |