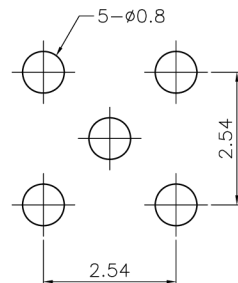
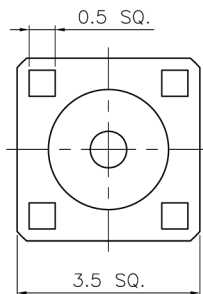
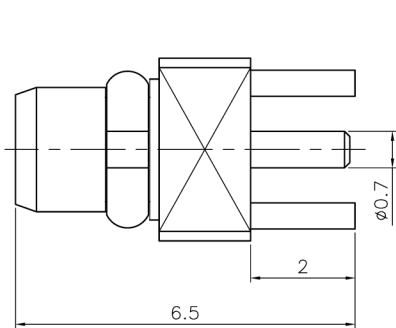


REVISIONS		
ISS	ZONE	DESCRIPTION\PER REQUEST\DATE

注意事項
1 包裝方式:500/盤 PVC



PCB MOUNTING HOLE
(印刷電路板架設孔)

TYPICAL SPECIFICATIONS

1.0. ELECTRICAL

- 1.1. FREQUENCY RANGE: DC-6 GHz
- 1.2. NOMINAL IMPEDANCE: 50 OHM
- 1.3. WORKING VOLTAGE: 170 VOLTS MAX.
- 1.4. PROOF VOLTAGE: 500 VOLTS

2.0. MATERIALS

- 2.1. BODIES: BRASS PER JIS-C3604
- 2.2. CENTER CONTACT: BRASS PER JIS-C3604
- 2.3. INSULATION: PTFE PER ASTM D1457 AND ASTM D1710
- 2.4. RING: BERYLLIUM COPPER PER ASTM B196 UNS C17200

3.0. ENVIRONMENTAL

- 3.1. OPERATING TEMPERATURE RANGE: -55° C TO +155° C

4	RING	BE CU	GOLD	1	MMCX1121A1-4BEG
3	CONTACT PIN	BRASS	GOLD	1	MMCX1251C2-3G
2	INSULATOR	PTFE	WHITE	1	MMCX1251C1-2T-50
1	BODY	BRASS	GOLD	1	MMCX1251C2-1G
NO.	DESCRIPTION	MATERIAL	FINISH	Q'TY	DRAWING NO.

DIMENSIONS ARE IN MILLIMETERS UNLESS OTHERWISE SPECIFIED TOLERANCES		APPROVED/核准			
ANGLES = ±3° UP TO 6 = ±0.1 6-40 = ±0.2 40-120 = ±0.6 120-315 = ±1 ABOVE 315 = ±1.6		MARK	TITLE/品名 MMCX STR PCB PLUG		
SCALE/比例 10/1		CHECKED/檢查	DRAWING NO./圖號 MMCX1251C2-GTG-50		
DATE/時間 05-20-12		DRAWN/繪圖	CUSTOMER NO./客戶編號		
FILE NO. F:\CAD\MMCX\1251C2\50\GTG-A#		MARK	REV	A	
			REV		