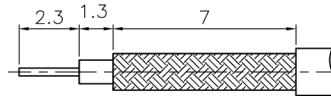
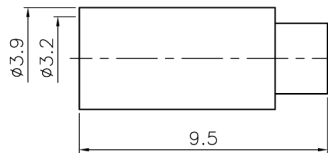
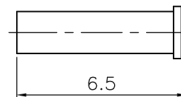
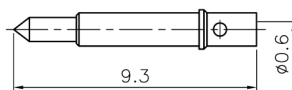
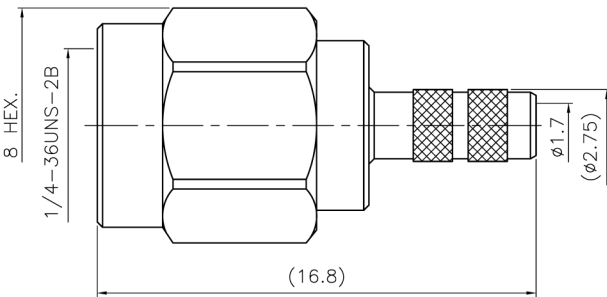


REVISONS		
ISS	ZONE	DESCRIPTION\PER REQUEST\DATE

注意事項	
1	包裝方式: 500/包



RECOMMENDED
CABLE STRIPPING DIM'S
(建議剝線尺寸)



1. CRIMPED FERRULE
HEX. CRIMP SIZE ".128"
2. CONTACT PIN TO SOLDER

TYPICAL SPECIFICATIONS

1.0. ELECTRICAL

- 1.1. FREQUENCY RANGE: DC-6 GHz
- 1.2. NOMINAL IMPEDANCE: 50 OHM
- 1.3. WORKING VOLTAGE: 170 VOLTS MAX.
- 1.4. PROOF VOLTAGE: 500 VOLTS
- 1.5. VSWR: 1.3 MAX. @ 3 GHz

2.0. MATERIALS

- 2.1. BODIES: BRASS PER JIS-C3604
- 2.2. CENTER CONTACT: BRASS PER JIS-C3604
- 2.3. INSULATION: PTFE PER ASTM D1457 AND ASTM D1710
- 2.4. FERRULE: BRASS PER JIS-C3602

3.0. ENVIRONMENTAL

- 3.1. OPERATING TEMPERATURE RANGE: -65° C TO +165° C

8	FERRULE	BRASS	GOLD	1	FR-39/32-27/2X95G
7	SLEEVE	BRASS	GOLD	1	SL-2/09X65G
6	CONTACT PIN	BRASS	GOLD	1	SMA1121A4-6-127/06G
5	SHELL	BRASS	GOLD	1	SMA1121A1-5HG
4	GASKET	SILICONE	RED	1	GS-58/45X08RS
3	RING	SUS 304	NATURAL	1	SMA1121A1-3ST
2	INSULATOR	PTFE	WHITE	1	SMA1121A4-2T-50
1	BARREL	BRASS	GOLD	1	SMA1121A6-1-275/17G
NO.	DESCRIPTION	MATERIAL	FINISH	Q'TY	DRAWING NO.

DIMENSIONS ARE IN MILLIMETERS

APPROVED/核准

UNLESS OTHERWISE SPECIFIED
TOLERANCES

- ANGLES = ±3°
UP TO 6 = ±0.1
6-40 = ±0.2
40-120 = ±0.6
120-315 = ±1
ABOVE 315 = ±1.6

SCALE/比例 5/1

DATE/時間 07-10-13' FILE NO. F:\CAD\SMA\1121A4\50\GTG-178U-A#



JAW Dropper
Innovation Channel Co.,Ltd.

TITLE/品名 SMA STR PLUG		REV	A
DRAWING NO./圖號 SMA1121A4-GTG-178U-50		REV	
CUSTOMER NO./客戶編號		REV	